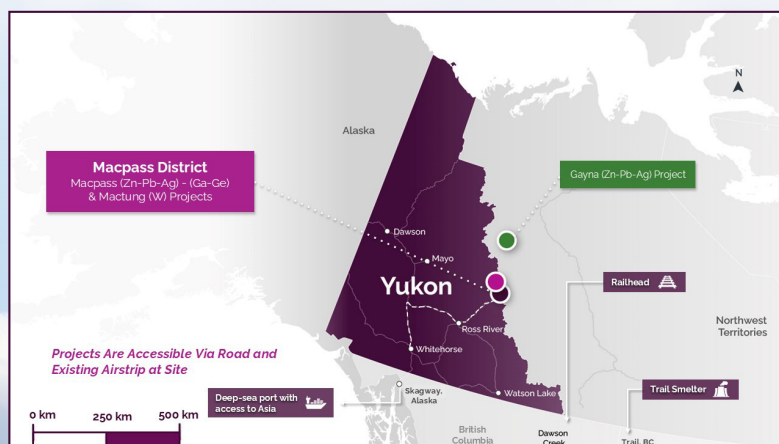




Macpass Project

ONE OF THE WORLD'S
LARGEST UNDEVELOPED
HIGH-GRADE ZINC
PROJECTS*

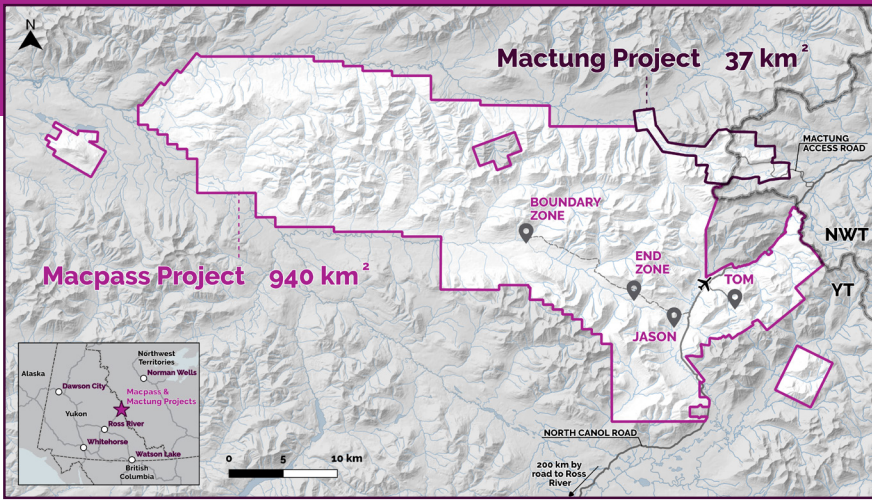


Location

The Macpass Project is located in southeast Yukon approximately 200 km from Ross River, near the Northwest Territories border and within the traditional territories of the Kaska Dena Nation and the First Nation of Na-cho Nyäk Dun. The property is accessible via the North Canal Road, and by air via the Macmillan Pass aerodrome.

Overview

Macpass comprises a 940km² area with several large zinc-lead-silver occurrences including Tom, Jason, Boundary, and End zones. Other high-potential targets occur along a highly prospective mineralization corridor trending northwest of the established deposits. Fireweed continues to advance the project through systematic exploration and drilling, technical and environmental studies, and social engagement leading toward future project assessment and permitting.



2024 Highlights

2024 Resource Estimate:

- Doubled tonnage
- Tripled contained ZnEq in Indicated Resources
- One of the largest gallium (Ga) and germanium (Ge) deposits globally

Drilling Highlights:

- +16,000m drilled
- Identified massive sulphide extensions at Boundary, Tom, and Jason (outside 2024 MRE envelope)

Exploration:

- Largest regional program to date with gravity surveys, soil sampling, aerial prospecting, LiDAR, and VTEM informing 2025 targets
- Largest muon tomography survey north of 50°N to identify underground density contrasts
- Directional drilling to reduce environmental impact and costs

Sustainability:

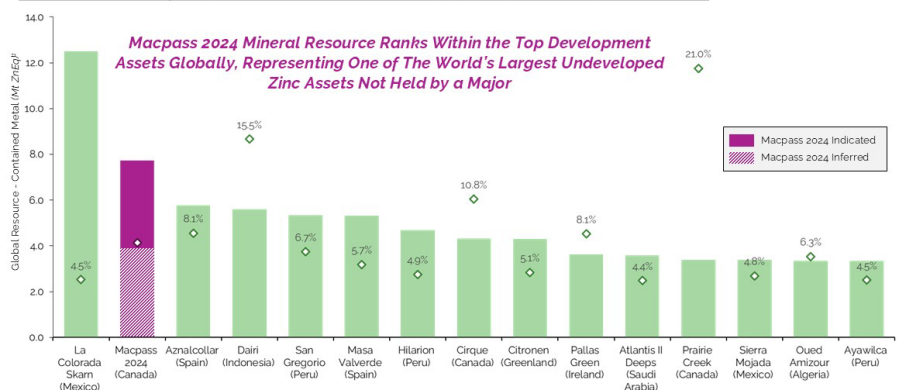
- Zero lost-time injuries with a unified safety management system
- Rigorous environmental compliance and monitoring
- 16 wildlife and aquatic studies with 4,000 in-field hours by 24 professionals
- Solar power installation at Sekie Camp in collaboration with Ross River communities, cutting emissions and carbon reliance

Macpass 2024 MRE

Category	Deposit	Tonnage	Grade				Contained Metal		
			ZnEq	Zn	Pb	Ag	Zn	Pb	Ag
		(Mt)	(%)	(%)	(%)	(g/t)	(M lbs)	(M lbs)	(M oz)
Indicated	Tom	17.52	9.90%	6.30%	3.34%	33.0	2,435	1,291	18.56
	Jason	3.80	9.09%	7.62%	1.86%	1.7	638	156	0.21
	End Zone	0.34	16.15%	3.81%	12.32%	86.2	29	93	0.95
	Boundary	34.32	5.63%	4.87%	0.55%	21.6	3,682	413	23.83
	Total	55.98	7.27%	5.49%	1.58%	24.2	6,784	1,952	43.54
Inferred	Tom	18.94	9.10%	6.56%	2.30%	25.2	2,738	960	15.37
	Jason	11.65	10.40%	5.48%	4.33%	48.2	1,407	1,112	18.05
	End Zone	0.44	8.76%	1.86%	6.88%	48.1	18	67	0.68
	Boundary	17.43	3.75%	3.48%	0.23%	9.5	1,337	87	5.32
	Total	48.46	7.48%	5.15%	2.08%	25.3	5,500	2,226	39.42

Macpass Relative Positioning

Select Zinc-primary Development Assets - Ranked by Contained Metal (Mt ZnEq; % ZnEq)*



Note: Ranking excludes assets located in China, Russia, Iran, and Myanmar, as well as assets that are unlikely to be developed or advanced due to technical challenges (Selwyn, Admiral Bay, Reward, Hackett River).

* ZnEq quantities calculated based on the content of the following metals: Zn, Pb, Cu, Ag, Au. ZnEq pricing based on Macpass 2024 MRE assumptions (US\$1.40/lb Zn, US\$1.10/lb Pb, US\$25.0/oz Ag) and LT analyst consensus estimates (US\$4.08/lb Cu and US\$1.915/oz Au).

Source SNL Cap IQ and company public disclosure.